



# NetSupport Startup Guide for Tarleton Faculty

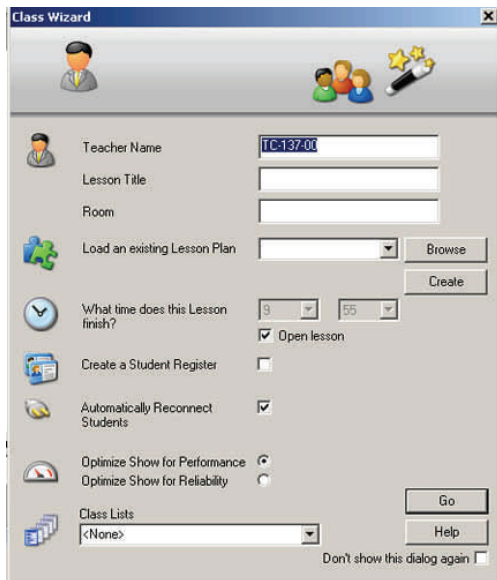
The Center for Instructional Technology  
and Distributed Education



*July 8, 2009  
version 1.2*

# NetSupport School Tutor Instructional Tool for Computer Labs

NetSupport School is an instructional tool available for faculty use in Tarleton State University computer labs. NetSupport School allows:

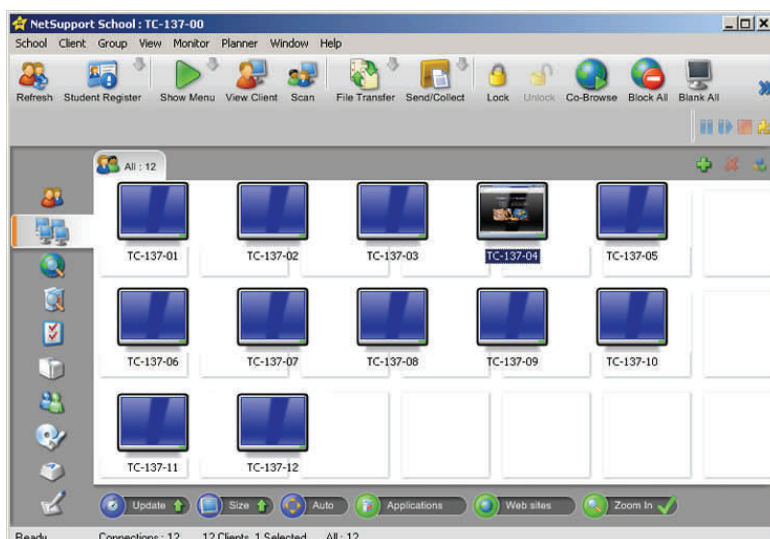


- Faculty to monitor students computer screens.
- Lock student computers while instructing, if necessary.
- Share the instructor's screen with students to aid in instruction.
- Share a student's screen with other students.

## Logging in to NetSupport School

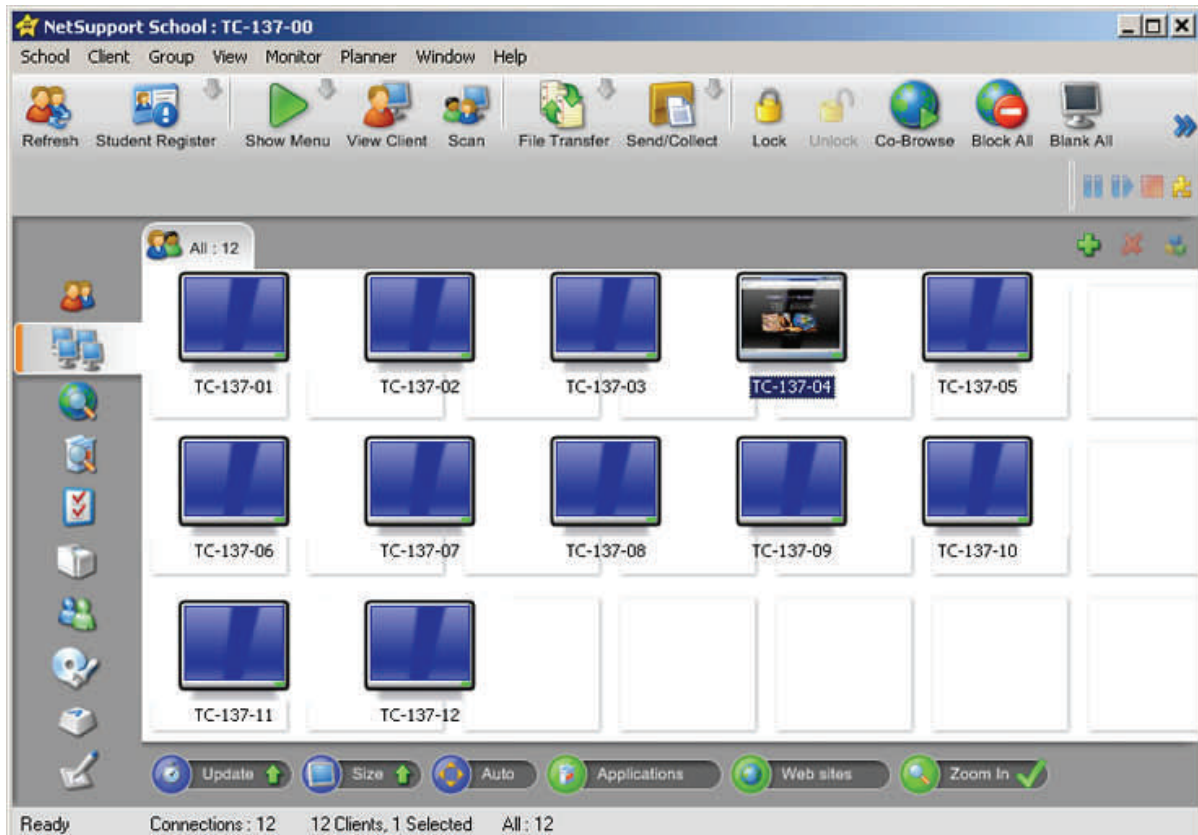
To log in to NetSupport School:

- 1) Start -> All Programs -> NetSupport School Folder -> **NetSupport Tutor**
- 2) From Class Wizard (pictured above) enter computer name in the "Teacher Name" window -> Go button.
- 3) NetSupport School will populate your lab automatically. (see Lab Population Guide if lab fails to populate)
- 4) NetSupport School will open with a view on student computers.



July 8, 2009  
version 1.2

# NetSupport School Interface



View a student list.



View all lab computers screens at once. Refreshes every 5 seconds.

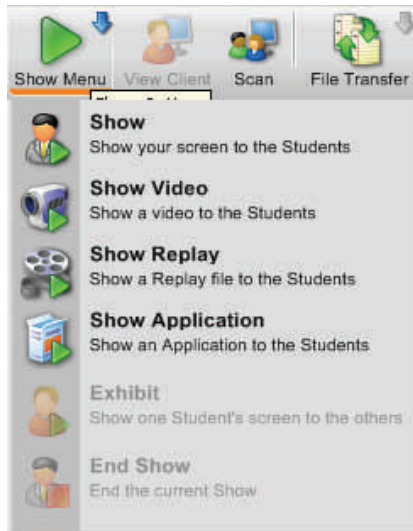


Explore the Internet with students.



Show menu options:

- Instructor screen
- Video
- Application



Blank All - blanks student computer screens.

Lock - locks keyboards and mice.

# NetSupport School Lab Population Guide

## Locations

AUTRY 302  
COBA 204  
COBA 206  
COBA 208  
COBA 209  
ET 109  
FA 120  
HICKMAN 530  
HOWELL 318  
Math 226E  
Math 227  
OAG 205  
OAG 206  
OAG 208  
OAG 209  
SCI 206  
SCI 207  
SCI 207A  
SCI 208  
TC 014  
WGYM 105  
HYEG 203  
HYEG 204

## Lab Names

AUTRY-302  
COBA-204  
COBA-206  
INST208  
COBA-208  
ET-109  
PIANOLAB  
HICK-530  
HOWELL-318  
MATH-226E  
MATH-227  
OAG205  
OAG206  
OAG208  
OAG209  
SCI-206  
SCI-207  
SCI-207A  
SCI-208  
TC-014  
WYGM-105  
HYEG-203  
HYEG-204

**NetSupport School** is an instructional tool available for faculty use in Tarleton State University computer labs. NetSupport School allows:

- Faculty to monitor students computer screens.
- Lock student computers while instructing, if necessary.
- Share the instructor's screen with students to aid in instruction.
- Share a student's screen with other students.

If you have **trouble finding student computers** in your lab using NetSupport School, use the following directions:

1. Open NS Tutor
2. Click School > Configuration > Startup > Browse and Connect to Students Starting With
3. Enter the naming convention in your lab without designating the workstation, for example, OAG 205, OAG 209, SCI-207A, AUTRY-302

